

# LAKELINE LLC

## Installation of the Lakeline Focal Point Fiber Optic Sights for Taurus PT111 G2, PT140 G2, 709 and 740:

### Tools:

- Torx T8 Driver or small Phillips screwdriver (check your screw).
- Small Slotted Head Screwdriver
- Thread Locking Compound
- Single sided razor blade, dags, side cutter or nail clipper
- Lighter, the long kind for lighting fires and burners is best, or matches.
- Fitting tools as required, soft faced mallet, sanding materials and surface, etc.

### Procedure

- Put on your safety glasses.
- Check that pistol is unloaded and remove magazine.
- Field strip the pistol, removing the slide and factory guide rod assembly per the factory user manual so it looks like below (this particular pistol has a Lakeline Guide Rod Assembly as well).



- Remove the factory sights using the small, slotted head screwdriver. Do not lose the screws, particularly the screw for the rear sight which will be used with the new sights:



- Clean up the slide, removing any debris from both the front and rear slide mounting areas. Make sure the opening for the front sight and rear sights are both clean lubricant free. Pre fit and check everything. Use a solvent or alcohol to insure there is no lubricant on the slide.



- Check the fit of the front sight to slide and fit as necessary:



- Hold the front sight as you turn it over against a non-marring table top:

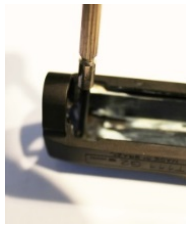


- Apply thread locking compound (I use blue strength) liberally to the screw, base of sight

# LAKELINE LLC

and into the screw hole. **The thread locker is absolutely required for the sights to stay mounted on both the front and rear sights.**

Gently tighten the screw while holding the front sight straight. Remember it is a small screw so don't strip it or the sight:



- Test and fit the rear sight to the slide, adjust the sight as necessary. To install, put thread locker on the area that the slide fits and the screw (too much on the threads can foul the striker):



- ***Gently insert the screw. You may want to check point of aim with a laser bore sight, or however you like, before locking the sight with thread locker. DO NOT OVERTIGHTEN. The screw does not hold the sight, the thread locker does. Over torquing can damage the sight, screw, and/or slide.***
- Wipe off the excess thread locker. Now, for the fiber insert. Clip the fiber tubes in the color you choose slightly longer than the metal sights like below:



- The fit between the fiber and the sights is supposed to be snug. Putting a soap solution on any tight fibers can help to get them to feed into the sights. Cutting them with an Exacto type of knife by pressing while rolling them on a cutting board will keep them more round at the cut. The factory cuts may have crushed the ends and may not feed well.
- Move the flame of the lighter or match close to the end of the fibers, and they will melt into a rivet like shape. Do not light the end of the fiber:



- You should now have a slide with fiber sights installed that looks something like this:



Reassemble the pistol and make sure and allow 24 hours for the thread locker to secure the sights before firing, or even vigorously cycling, the pistol.

Thank you! If you have any questions or problems, the best way to contact us is by email at [info@lakelinellc.com](mailto:info@lakelinellc.com)