

-LAKE·LINE-

PA-SFR-PT111-G2

Installation of the Lakeline 3 Dot Metal Sights for Taurus PT111 G2, PT140 G2, 709 and 740.

The sights set package includes a front sight, rear sight, FRONT sight screw, and REAR sight screw.

Tools:

- Torx T8 Driver or small Phillips (check your screw).
- Small Slotted Head Screwdriver
- Thread Locking Compound
- Fitting tools may be required, needle files, etc.

Procedure

- Put on your safety glasses.
- Check that pistol is unloaded and remove magazine.
- Field strip the pistol, removing the slide and factory guide rod assembly per the factory user manual so it looks like below (this particular pistol has a Lakeline Guide Rod Assembly as well).



- Remove the factory sights using the small, slotted head screwdriver. Do not lose the screws, particularly the screw for the rear sight which will be used with the new sights:



- Clean up the slide, removing any debris from both the front and rear slide mounting areas. Make sure the opening for the front sight and rear sights are both clean and lubricant free. Use a solvent or alcohol. **Pre fit ** (see explanation on back page) and check everything.**



- Fit the front sight to the slide:

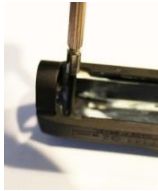


- Hold the front sight as you turn it over against a non-marring table top:



-LAKE-LINE-

- Apply thread locking compound (I use blue strength) liberally to the screw, base of sight and into the screw hole. The thread locker is absolutely required for the sights to stay mounted on both the front and rear sights. Gently tighten the screw while holding the front sight straight. It is a small screw with only a few threads going into aluminum:



- Congratulations, the front sight is installed. Test fit the rear sight by sliding it into the dovetail. If the fit is tighter than desired, use some wet/dry sandpaper on a smooth, flat surface and slowly remove material from the bottom of the sight until it fits snugly. Now, turn over the slide, and put thread locker on the area that the slide fits and the screw (too much on the threads can foul the striker):



- ***Gently insert the screw. You may want to check point of aim with a laser bore sighter, or however you like, before locking the sight with thread locker. DO NOT OVERTIGHTEN. The screw does not secure the sight, the thread locker does. Over tightening the sight will damage the sight.***
- Wipe off the excess thread locker and wait 24 hours for it to set before using.



Reassemble the pistol and make sure and allow 24 hours for the thread locker to secure the sights before firing, or even vigorously cycling, the pistol.

Thank you! If you have any questions or problems, the best way to contact us is by email at

info@lakelinellc.com

**** The front sight needs to be fitted so that it fits all the way down against the slide.** No light should be visible between the sight and the slide when viewed from the side.

The sight openings in the slides vary. Taurus slides vary more than most. Manufacturer tools wear as gun production goes along and there is a tolerance for the sight openings that has variation. Also, parts installed on a pistol slide go through tremendous accelerations and have to be mounted very securely for them to stay in place.

So, our sights are made to the largest sizes of the openings, and are fit to the slide during installation so a tight fit can be had with all pistols. I use needle files <https://www.harborfreight.com/12-piece-needle-file-set-468.html>. I take one swipe on each of the flats on the boss on the bottom of the sight, test fit the sight, and repeat until I have a snug fit that requires me to have to tap the sight in to the slide. I use a wood block against the sight and a gunsmith hammer for the tapping.

This is normal. Dovetail sights have the same issue with the dovetail tolerances. Here are some articles on it:

<https://shop.harrisoncustom.com/fitting-and-installing-dovetail-sights>

<https://williamsgunsight.com/shop-williams-gun-sights/sight-installation-documents/>
